

# GPS/GSM TRACKER USER MANUAL



## Preface

Thank you for purchasing our product. This manual shows how to operate the device smoothly and correctly. Make sure to read this manual carefully before using this product. Please note that specification and information are subject to changes without prior notice in this manual. Any change will be integrated in the latest release. The manufacturer assumes no responsibility for any errors or omissions in this document.

## 1 Summary

Working Based on existing GSM network and GPS satellites, this product can locate and monitor any remote targets by SMS.

## 2 Applications

- Protect child / the old / the disabled / pet etc
- Provide peace-of-mind for businessmen
- Manage personnel
- Track criminals secretly

## 3.Specification:

<b>GSM</b>	
GSM Module	GSM 850MHz
	GSM 900MHz
	GSM 1800MHz
	GSM1900MHz
GSM Antenna	Built-in
<b>GPS</b>	
Chip	Sirf StarIII
Frequency	GPS L1 1575.42MHz,C/A-code
Channels	20
Data protocol	NMEA0183 or Binary
Start Time(open sky)	Cold Start : 40sec
	Hot Start : 3sec
GPS Antenna	Active Patch antenna
Standby Current	1mA @2.85V All
Tracking Current	31mA @2.85V All
Accuracy	10~20m
<b>Electrical</b>	
Operating Voltage	3.3V
Charge Voltage	5V
Operating	80mA

Talk	100mA
Battery	Li-ion 800mAh
<b>Others</b>	
Operating temperature	-20°C to +50°C
Speaker (Built-in)	32Ohm/0.5W
Microphone (Built-in)	58db

## 4. Usage

### 4.1 SIM card installation

Buy SIM card from local telecommunication service provider

Make sure that there is no **call transfer**

Insert the SIM card into the unit.



### 4.2 battery and charger

Do charge the battery to capacity in 8 -12 hours for first use.

Please use the battery and charger provided by the manufacturer.

This unit adopts built-in Li-ion battery, and full battery will support around 48 hours use on end. After first use, the battery can be charged fully in 3-5hours.

### **Cautions:**

- a:** For its Li-ion battery, which contains harmful chemicals and may burst, please don't bump, puncture it violently and keep it off fire.
- b:** Please charge the battery in time to keep it working normally.

## **4.3 Start up**

- Put the SIM card in place.
- Turn on the unit **outdoors** and push the power button to "on" side.



- In 10 or 40seconds, the unit will begin to work and acquire the GSM signals as well as the GPS signals. The indicator will keep flashing every 3 seconds when the unit has received the signals, otherwise it will keep on.
- When this unit receives GPS signals normally, you can use it and do all the following settings.

## **4.4 Authorization**

There are only 8 numbers able to be authorized.

Send SMS “:+password+A1(1,...8),+country code+ mobile number#” to set up a authorized number. If the number is successfully authorized, the unit will reply “mobile number ok!” in SMS.

For example, please send “:123456A1, +8613812345678#” to tracker to set 13812345678 as an authorized number.

(default password : 123456)

Delete number: :123456A(1~8), D#

## 4.5 Change the password

Send SMS “:+old password +H +new password#” to change the password.

Note: H must be English in capital, send it to GPS&GSM device to modify the password. (Default password: 123456)

4.5.1 The pre-set password won't be erased by changing a new SIM card.

4.5.2 Be sure keep the new password in mind, otherwise you have to upload the software to restore the original setting in case of losing the new password.

4.5.3 Make sure the new password is in 6 digits, or else the tracker can not recognize the password.

## 4.6 Apply for one position service

Send SMS “:+password+ F” to the item, it will report its position back to you by SMS. Only when the authorized number sends the command, it will report GPS information.

#### 4.7 SOS button

Press the SOS for 3 seconds, it will send “help me! + GPS info” to A1, A2, A3 numbers. At the same time, it will dial up the 3 authorized numbers (A1, A2, A3). When the telephone pick up, two ways communication starts.



#### 4.8 Dial the preset phone number by Call 1 or Call 2

Press the Call 1 button/ Call 2 button for 3 seconds, the unit will call the preset phone number of Call 1/Call 2, then you can talk with another people.

The preset number: call 1---A4

Call 2---A5

#### 4.9 Monitor function

When you want to monitor the voice around the unit, you can call it.

The unit can answer by itself, so you can hear what you want. Only the authorized number can do this function.

#### 4.10 SMS command to set up GEO-FENCE

Set up a geo-fence for the device to restrict its movement within a district. The device will send the message to the authorized numbers as “Stockade +geo info” when it breaches the district

Message content: : password +I (1~5), (1/0), (1/0), the first latitude N/S the first longitude E/W the second latitude N/S the second longitude E/W

notice: (1~5) is the fence number, total 5 group  
the first (1/0) is the swift, 1 means turn on; 0 means turn off.  
The second (1/0) is the alarm mode, 1 means go out, 0 means go in  
The latitude and longitude must be entered as degree, minute, second:  
DDDFMMmm  
DDD means degree (two latitude numbers , three longitude numbers)  
FF means minute ( two numbers)  
MM means second ( two numbers)  
mm means decimal of second (two numbers)

#### 4.11 SMS command to check the 8 preset mobile phone numbers

Message content: “: password +G”

Note: G must be English in capital, send it to the unit to check the preset mobile numbers.

#### 4.12 SMS command to set up over speed alert

Message content: : password +J (1/0), xxx, xxx#

notice: 1 means turn on, 0 means turn off  
the first xxx: the alarm speed, when the unit's speed exceed the preset number, it will send alarm message. (default speed: 80 km/h)  
the second xxx: reservation 030

#### 4.13 Coordinates-saving

The unit will automatically send the latest available GPS information to the preset number A1 when it enters into the area without GPS signal. The unit will send “Before +GPS info”.

#### 4.14 Turn on/off over speed, continuous tracking by programming

Message content: “: password+ K a, b, c, d, e+3 digitals (0, 1,2) #”

**Note:** 0 means turn off    1 means turn on    2 means ignore

a refers to over speed alert function

b, c , d reservation        default number :2

e refers to continuous tracking

For example:

:123456K122221# means over speed function turn on / continuous tracking function turn on

:123456K022221#means over speed function turn off/ continuous tracking function turn on

#### 4.15 Auto Track

Tracking report function can be turned on or off according to the requirement of the user .Tracking function will continually report the target’s position until it get stop command. In this continuous tracking mode, the unit will send one position message at a preset time interval.

Message content: “: password +M (0/1), xxx (S/M/H) #”

Note: 0 means turn off, 1 means turn on

xxx means time interval

S means second, M means minute, H means hour

H≤90, S,M<255

For example: `:123456M1,030S#` means continuous tracking function is turn on, it will report the target's position every 30 second.

#### 4.16 GPRS setting

Make sure that your SIM card in the unit supports the GPRS function

SMS command to turn on GPRS

Message content: `": password+ D"`

SMS command to turn off GPRS

Message content: `": password +E"`

In order to use GPRS function, the user needs to set IP, Port and APN (access point name) by sending SMS commands

#### 4.18 SMS command to set APN&IP&PORT

Message content: `": password + C+ APN, IP: Port#"`

Note: Make sure that the IP should be the Extranet IP. If your pc is in Internet, you must know your Extranet IP. You can know your PORT from the router's configuration.

Now there are two ways of getting your IP address and PORT:

**First**, you can get your IP and port through the DOS Order:

ipconfig.

**Second**, the IP address and PORT can be got from IT supports,

such as some IT support websites..

FORMAT:

IP: xxx.xxx.xxx.xxx

PORT: [1024, 65535]

As soon as the IP & Port & APN is set up, the user can send SMS to tracker. The tracker will report the coordinates to IP address.

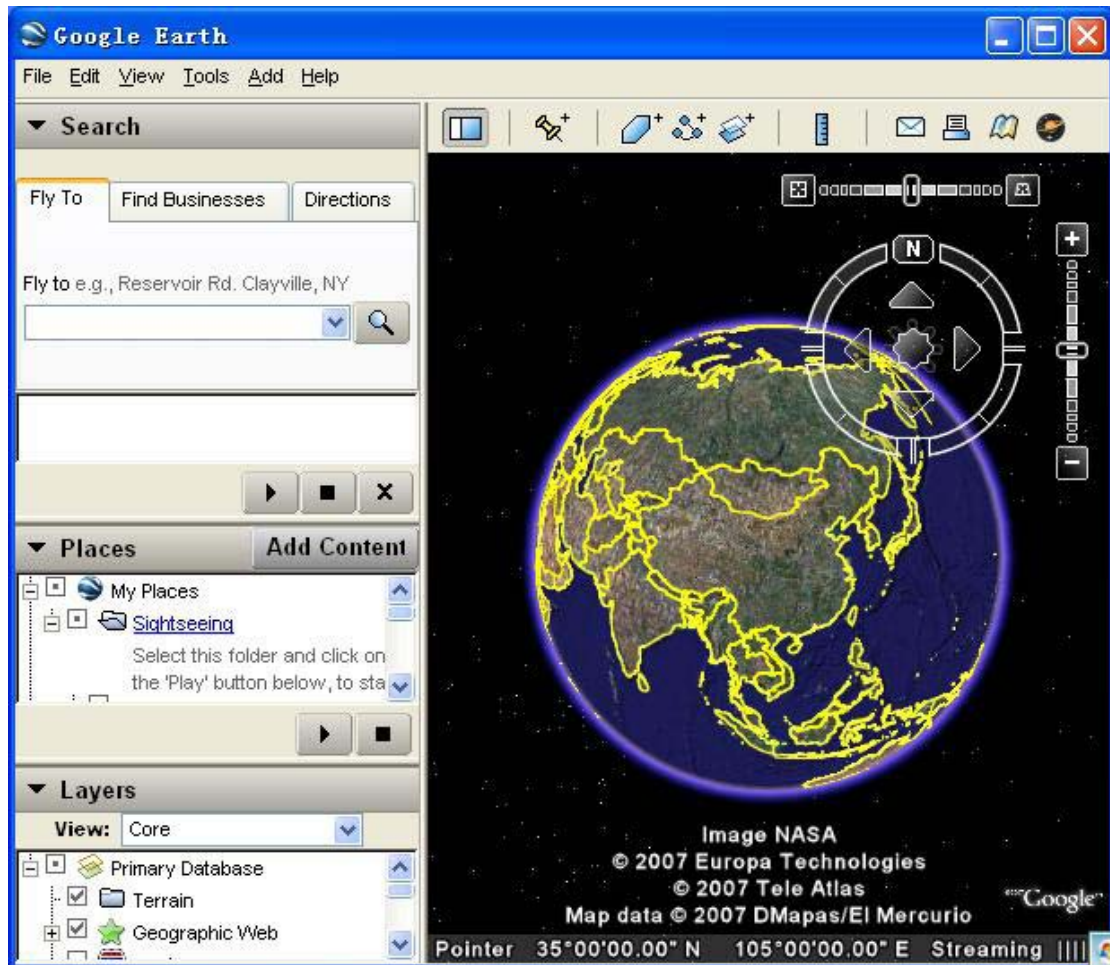
## **5. Displaying location on map**

5.1 Download Google earth software from <http://earth.google.com/>

5.2 Start the Google Earth software. (For more information about Google

Earth software, please refer to <http://earth.google.com/>) as

following picture shows:



Or you can start the Internet Explorer and type

<http://maps.google.com> to connect to Google Map website for displaying the location map.

You can get the latitude & longitude data by sending “Password +F”SMS command Code to the unit. Then you input the latitude and longitude that you receive from SMS and click on search button.

The

Google earth will display the location map for you.

## **6. Cautions**

**Please comply with the instructions to extend the unit life:**

1. Keep the unit dry. Any liquid, i.e. rain, moisture, may destroy or damage the inside circuitry.
2. Don't use & store the unit in dusty places.
3. Don't put the unit in overheated or overcooled places.
4. Handle carefully. Don't vibrate or shake it violently.
5. Clean the unit with a piece of dry cloth. Don't clean in chemicals, detergent.
6. Don't paint the unit, this may cause some foreign materials left in between the parts.
7. Don't disassemble or refit the unit.
8. Please use and charger provided by manufacturer. Using other chargers will cause unwanted situation.